

St. Marie of the Incarnation CES Student Apparel Order Form

ORDER ONLINE THROUGH SCHOOL-DAY

Due date Oct. 12th



GILDAN COTTON T-SHIRT – LOGO A

Colour: SPORT GREY W/ GREEN LOGO OR GREEN W/ GOLD LOGO
YOUTH – XS – XL \$10.00
ADULT – XS – XL \$10.00



GILDAN COTTON T-SHIRT – LOGO B

Colour: SPORT GREY W/ GREEN LOGO OR GREEN W/ GOLD LOGO
YOUTH – XS – XL \$10.00
ADULT – XS – XL \$10.00



ATC PERFORMANCE SPORT T-SHIRT – LOGO A

Colour: CHARCOAL W/ GREEN LOGO OR GREEN W/ GOLD LOGO
YOUTH – XS – XL \$15.00
ADULT – XS – XL \$15.00



ATC PERFORMANCE SPORT T-SHIRT – LOGO B

Colour: CHARCOAL W/ GREEN LOGO OR GREEN W/ GOLD LOGO
YOUTH – XS – XL \$15.00
ADULT – XS – XL \$15.00



GILDAN COTTON PULLOVER HOODIE – LOGO C

Colour: SPORT GREY W/ GREEN LOGO OR GREEN W/ GOLD LOGO
YOUTH – XS – XL \$25.00
ADULT – XS – XL \$25.00



GAMEDAY PERFORMANCE SPORT HOODIE – LOGO D

Colour: COAL GREY W/ GREEN/GOLD LOGO OR GREEN W/ GOLD/GREEN LOGO
YOUTH – XS – XL \$45.00
ADULT – XS – XL \$45.00

**PLEASE INDICATE SIZE, COLOUR, AND QUANTITY AS REQUIRED
ON THE SCHOOL DAY ORDER FORM**

All above prices **INCLUDE**
applicable taxes.

St. Marie of the Incarnation CES Student Apparel Order Form

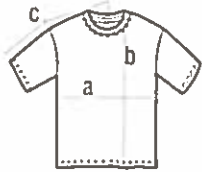
ORDER ONLINE THROUGH SCHOOL-DAY
Due date Oct. 12th



| | |
|--|---|
| | <p>GILDAN COTTON SWEATPANT – LOGO E Colour: SPORT GREY W/ GREEN LOGO YOUTH – S – XL \$20.00 ADULT – S – XL \$20.00</p> |
| | <p>PERFORMANCE SPORT SWEATPANT – LOGO E Colour: CHARCOAL GREY W/ GREEN LOGO YOUTH – S – XL \$50.00 ADULT – XS – XL \$50.00</p> |
| | <p>WARRIOR WINDPANT – LOGO E Colour: BLACK W/ GOLD LOGO OR BLACK W/ GREY LOGO YOUTH – XS – XL \$50.00 ADULT – XS – XL \$55.00</p> |
| | <p>ATC PERFORMANCE SPORT SHORT – LOGO F Colour: GREEN W/ GOLD LOGO OR GREY W/ GREEN LOGO YOUTH – XS – XL \$16.00 ADULT – XS – XL \$16.00</p> |
| | <p>COLLEGIATE BEANIE – LOGO B OR LOGO F Colour: GREEN/GOLD W/ GREEN LOGO OSFA - \$15.00</p> |
| | <p>6 PANEL CAP W/ VELCRO STRAP – LOGO B OR F Colour: GREEN W/ GOLD LOGO OSFA - \$15.00</p> |
| | <p>POLYCOTTON MESH CAP WITH PLASTIC SNAP STRAP – LOGO B OR F Colour: GREEN W/ GOLD LOGO OSFA - \$15.00</p> |

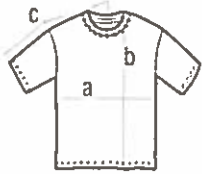
St. Marie of the Incarnation CES Student Apparel Order Form - Sizing Charts

Gildan® Ultra Cotton® Adult T-Shirt



| | Width (a) | | Length (b) | | CB Sleeve (c) | |
|-----|-----------|------|------------|------|---------------|------|
| | (inches) | (cm) | (inches) | (cm) | (inches) | (cm) |
| S | 18.1 | 46 | 27.6 | 70 | 16.5 | 42 |
| M | 20.1 | 51 | 28.3 | 72 | 18.1 | 46 |
| L | 22.0 | 56 | 29.5 | 75 | 19.7 | 50 |
| XL | 24.0 | 61 | 30.3 | 77 | 20.9 | 53 |
| 2XL | 26.0 | 66 | 31.5 | 80 | 22.4 | 57 |
| 3XL | 28.0 | 71 | 32.3 | 82 | 24 | 61 |


Gildan® Ultra Cotton® Youth T-Shirt




| | Width (a) | | Length (b) | | CB Sleeve (c) | |
|-----|-----------|------|------------|------|---------------|------|
| | (inches) | (cm) | (inches) | (cm) | (inches) | (cm) |
| YXS | 15.4 | 39 | 18.9 | 48 | 13.4 | 34 |
| YS | 16.9 | 43 | 20.3 | 51 | 15.0 | 38 |
| YM | 18.1 | 46 | 22.4 | 57 | 16.1 | 41 |
| YL | 18.9 | 48 | 24.4 | 62 | 16.9 | 43 |
| YXL | 20.1 | 51 | 26.0 | 66 | 18.1 | 46 |

GILDAN® 18500 SERIES HOODIE SWEATSHIRTS (50/50 COTTON/POLY)

| 18500 ADULT SPECS | | | |
|-------------------|-----------|------------|---------------|
| Size | Width (A) | Length (B) | CB Sleeve (C) |
| Small | 20" | 26" | 33" |
| Medium | 22" | 27" | 34" |
| Large | 24" | 28" | 35" |
| X-Large | 26" | 29" | 36" |
| 2X-Large | 28" | 30" | 37" |
| 3X-Large | 30" | 31" | 38" |
| 4X-Large | 32" | 32" | 39" |
| 5X-Large | 34" | 33" | 40" |
| Tolerance | +/- 0.75" | +/- 1" | +/- 1" |



| 18500 YOUTH SPECS | | | |
|-------------------|-----------|------------|---------------|
| Size | Width (A) | Length (B) | CB Sleeve (C) |
| Youth Small | 15" | 18" | 23 1/2" |
| Youth Medium | 17" | 21" | 26 1/2" |
| Youth Large | 19" | 24" | 29 1/2" |
| Youth X-Large | 20" | 25 1/2" | 32 1/2" |
| Tolerance | +/- 0.5" | +/- 1" | +/- 1" |



S350 - ATC™ Performance Sport Tee

ADULT General Sizing Guide

| Size | XS | S | M | L | XL |
|------------------|---------|-------------|---------|---------|---------|
| Chest | 30"-32" | 34"-38" | 38"-40" | 42"-44" | 46"-48" |
| Waist | 28"-29" | 29"-32" | 32"-36" | 36"-38" | 38"-41" |
| Sleeve Length-CB | 31"-32" | 32"-33 1/2" | 34"-36" | 36"-38" | 38"-37" |

YOUTH General Sizing Guide

| Size | XS | S | M | L | XL |
|------------------|-----------------|-----------------|-----------------|-----------------|-----------------|
| Chest | 24"-26" | 26"-28" | 28"-30" | 30"-32" | 32"-34" |
| Waist | 21 1/2"-23 1/2" | 22 1/2"-24 1/2" | 24 1/2"-26 1/2" | 26 1/2"-28 1/2" | 27 1/2"-29 1/2" |
| Sleeve Length-CB | 24"-26" | 26"-28" | 28"-29 1/2" | 29 1/2"-31" | 31 1/2"-32" |

Game Day® Fleece Hooded Sweatshirt

ADULT General Sizing Guide


| Size | XS | S | M | L | XL |
|-----------------|---------|-------------|---------|---------|---------|
| Chest | 30"-32" | 34"-38" | 38"-40" | 42"-44" | 46"-48" |
| Waist | 28"-29" | 29"-32" | 32"-36" | 36"-38" | 38"-41" |
| Sleeve Length-C | 31"-32" | 32"-33 1/2" | 34"-36" | 36"-38" | 38"-37" |

YOUTH General Sizing Guide

| Size | XS | S | M | L | XL |
|------------------|-----------------|-----------------|-----------------|-----------------|-----------------|
| Chest | 24"-26" | 26"-28" | 28"-30" | 30"-32" | 32"-34" |
| Waist | 21 1/2"-23 1/2" | 22 1/2"-24 1/2" | 24 1/2"-26 1/2" | 26 1/2"-28 1/2" | 27 1/2"-29 1/2" |
| Sleeve Length-CB | 24"-26" | 26"-28" | 28"-29 1/2" | 29 1/2"-31" | 31 1/2"-32" |


Gildan Adult Pant Size Chart

| Measurement | ADULT | |
|-------------|---------------|---------------|
| | Width | Length |
| Small | 13" (33 cm) | 31.9" (81 cm) |
| Medium | 14.2" (36 cm) | 32.7" (83 cm) |
| Large | 15" (38 cm) | 33.1" (84 cm) |
| X-Large | 16.1" (41 cm) | 33.5" (85 cm) |



Gildan Kids Pant Size Chart

| Measurement | KIDS | |
|---------------|---------------|---------------|
| | Width | Length |
| Youth Small | 9.8" (25 cm) | 20.1" (51 cm) |
| Youth Medium | 11" (28 cm) | 22.4" (57 cm) |
| Youth Large | 11.8" (30 cm) | 25.2" (64 cm) |
| Youth X-Large | 13" (33 cm) | 27.6" (70 cm) |
| Tolerance +/- | 1" (2.5 cm) | 1" (2.5 cm) |



WARRIOR TRAINING PANT

| SIZE | XS | S | M | L | XL |
|-------|-----|------------------------|-------------------------|--------------------------|-------------------------|
| Waist | N/A | 29"-32" [73.5-81cm] | 32"-35" [81-89cm] | 35"-38" [89-96.5cm] | 38"-41" [96.5-104cm] |
| Hip | N/A | 34"-37" [86-94cm] | 37"-40" [94-101.5cm] | 40"-43" [101.5-109cm] | 43"-46" [109-117cm] |

ATC Shorts

ADULT General Sizing Guide

| Size | XS | S | M | L | XL |
|-------|---------|---------|---------|---------|---------|
| Waist | 28"-29" | 29"-32" | 32"-36" | 36"-38" | 38"-41" |

YOUTH General Sizing Guide

| Size | XS | S | M | L | XL |
|-------|-----------------|-----------------|-----------------|-----------------|-----------------|
| Chest | 24"-26" | 26"-28" | 28"-30" | 30"-32" | 32"-34" |
| Waist | 21 1/2"-23 1/2" | 22 1/2"-24 1/2" | 24 1/2"-26 1/2" | 26 1/2"-28 1/2" | 27 1/2"-29 1/2" |

