



reading standard music notation

Every note written on the staff tells you two specific things:

- ↳ The appearance of a note tells you how many beats it receives.
- ↳ Its placement on the staff tells you its name (review the musical alphabet on page 7).

1 quarter note

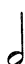

The quarter note looks like this  or  and receives one beat.



Let's place the quarter note on the staff.

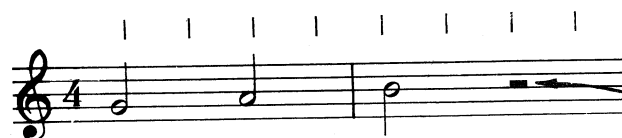


2 half note

The half note looks like this  or  and receives two beats.





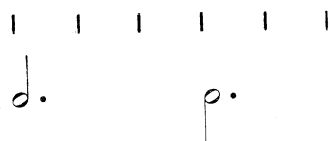
Let's place the half note on the staff.



HALF REST – Denotes two beats of silence

3 dotted half note


The dotted half note looks like this  or  and receives three beats.

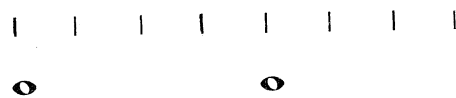


Let's place the dotted half note on the staff.



4 whole note

The whole note looks like this  and receives four beats.



Now, let's place the whole note on the staff.



WHOLE REST – Denotes four beats of silence