

# time signature

At the beginning of every song, you will now see a set of two numbers. These numbers are called a time signature (also called meter signature).

**4 3 2** – the top number indicates the number of beats in each measure.  
**4, 4, 4** – the bottom number indicates the kind of note that receives one beat ( $\frac{1}{4}$  or quarter note).

## let's play some songs using notation

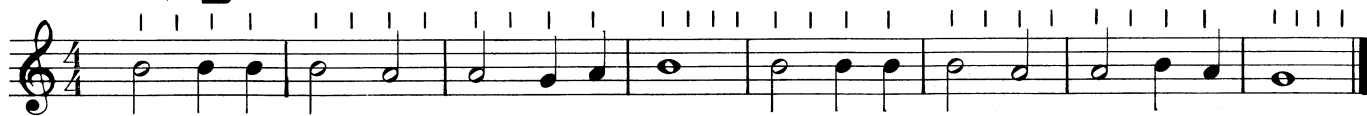
### merrily we roll along

*Listen* ■



This arrangement © Copyright 1973 by HAL LEONARD PUBLISHING CORPORATION, Winona, Minn. 55987  
Made in U.S.A. International Copyright Secured All Rights Reserved .

### solo flight



### windy day waltz



### cuckoo

